

The background of the book cover is a photograph of a building's exterior. It features several thick, square concrete columns with a rough, aggregate texture. The columns are arranged in a way that creates a sense of depth and shadow. There are windows with dark wooden frames, some of which are partially open. The lighting is dramatic, with strong highlights and deep shadows, suggesting a late afternoon or early morning setting. The overall aesthetic is modern and architectural.

Contemporary Indian Architecture

AFTER THE MASTERS

Vikram Bhatt & Peter Scriver

4

Newman Hall, Ahmedabad

Architect: Hasmukh C. Patel

Client: The Society of Jesus, Xaviers' Kelavni Mandal

Consultants: Vakil-Mehta-Parikh-Sheth (structure)

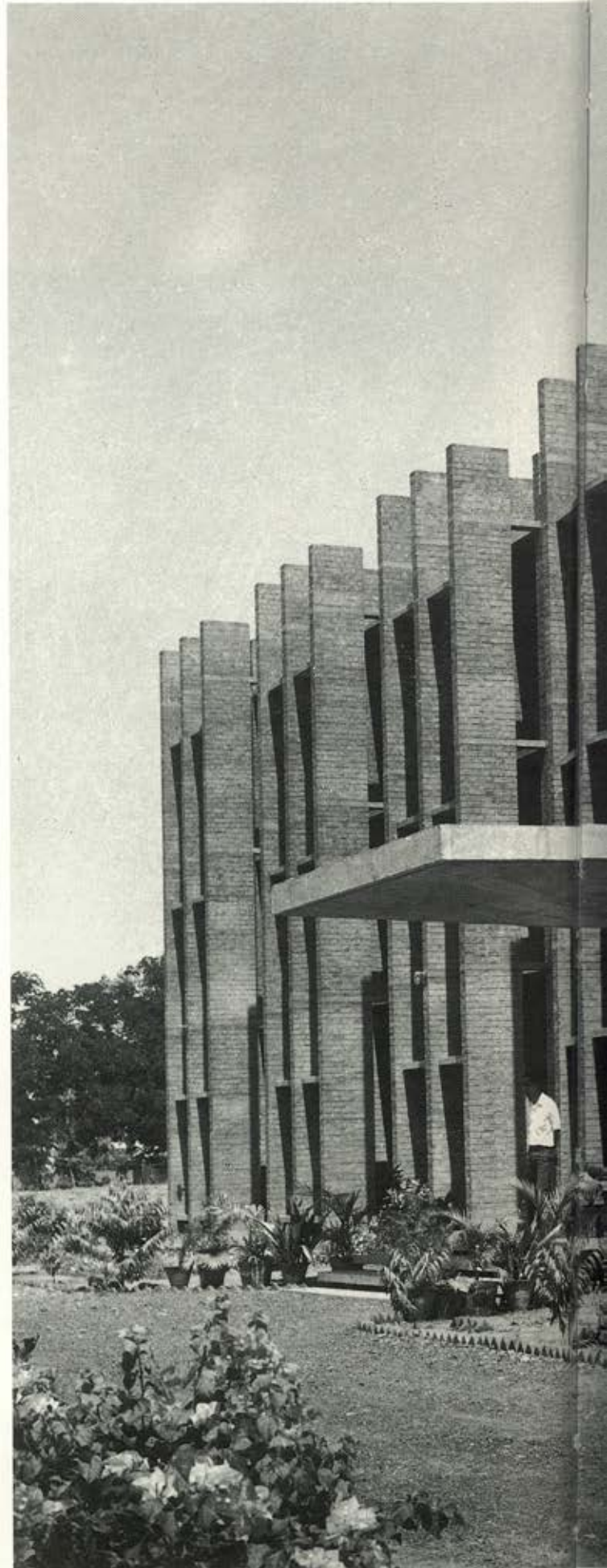
Contractor: Reverend Brother Martin Araquistain for the Society of Jesus

Year of Completion: 1965

Area: 3740 m²

A clear and gracious order executed with simple building techniques is the strength of this design. For a residence for Jesuit seminarians, the building is appropriately masculine in proportion, and spare and explicit in every detail. In the tradition of Jesuit missions around the world, it declares itself with a confident but accommodating catholicity. The assuredly modern, Cartesian order of the building is graciously — and almost casually — accommodated in the soft, subtropical environment. Open corridors, articulated by the rhythmic repetition of brick piers, are the essential architectural experience of this contemplative residential building. Medieval Christian cloisters of Europe and the monastic austerity of Louis Kahn's initial work in Ahmedabad are evident inspirations.

The three-storeyed structure is organized on an H-shaped plan. Two blocks of individual cells open on to common verandas that overlook an inner quadrangle. A three-tiered bridge links the two blocks to vertical circulation and a separate common room. The chapel, a small free-standing circular structure, is placed between the wings at the top of the H. It completes the enclosure of the quadrangle, a pleasant space casually planted with shade-giving trees and bougainvillea.



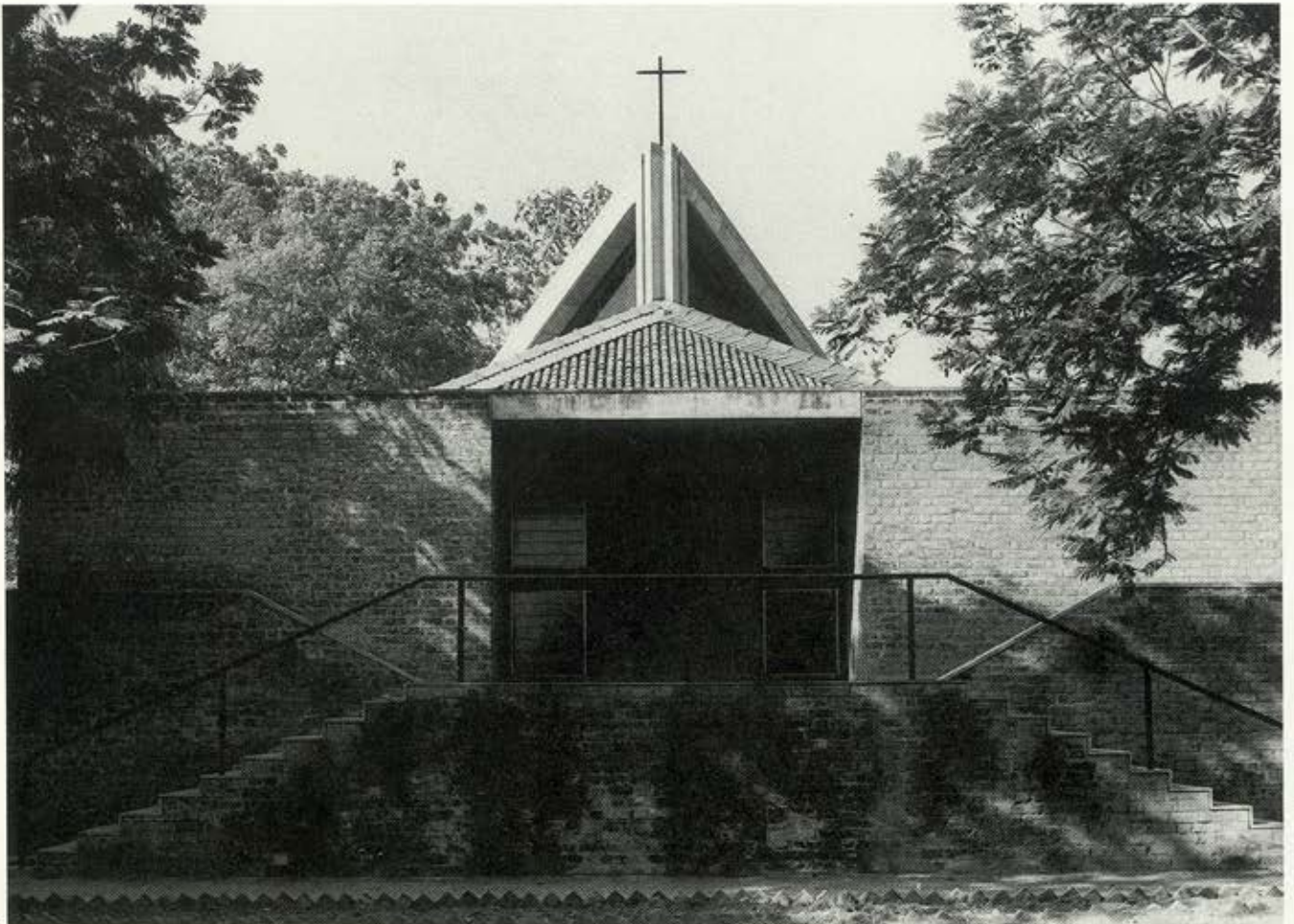


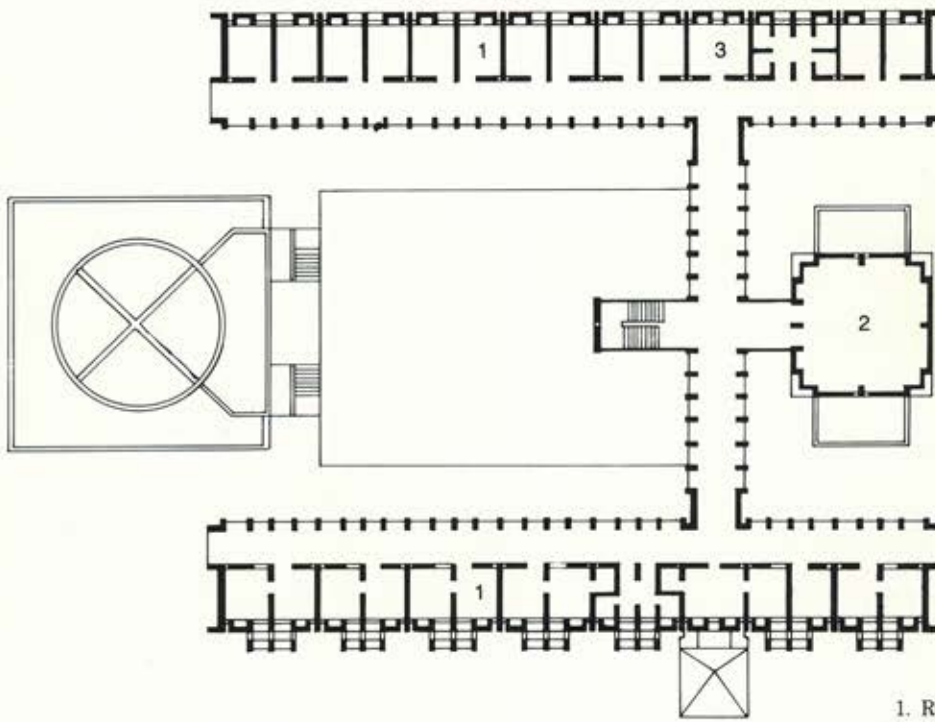
Previous page

1. Main facade
2. Verandah corridor adjoining individual cells
3. Chapel, central court



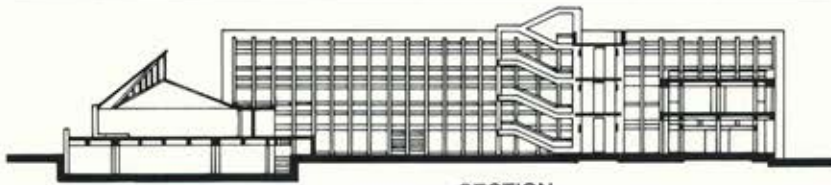
2



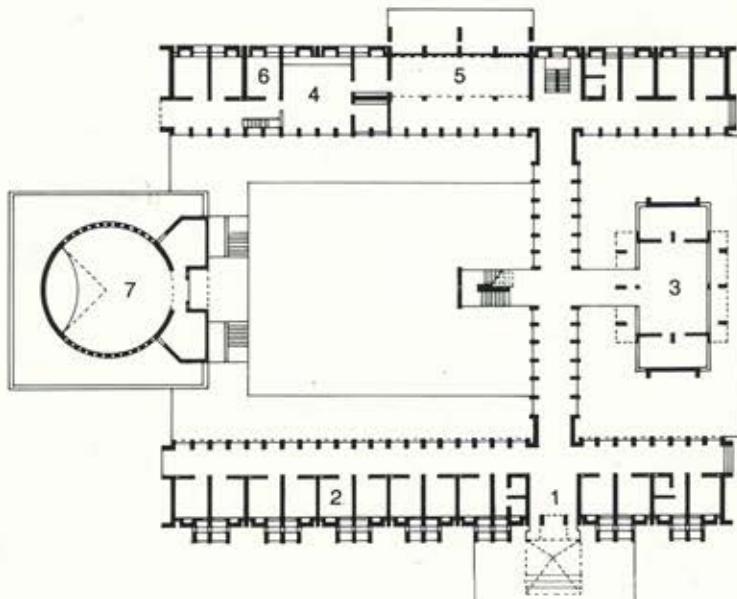


FIRST FLOOR

- 1. ROOMS
- 2. OFFICES
- 3. KITCHEN/PANTRY



SECTION



GROUND FLOOR

- 1. ENTRANCE
- 2. ROOMS
- 3. OFFICES
- 4. KITCHEN/PANTRY
- 5. DINING
- 6. STORES
- 7. CHAPEL

0 2.5 5 10m





Dena Bank, Regional Office Building, Ahmedabad

Architect: Hasmukh C. Patel

Client: Dena Bank

Consultants: Vakil-Mehta-Sheth (structure), S. K. Murthy (services)

Contractors: Rajesh Builders and H. K. Builders

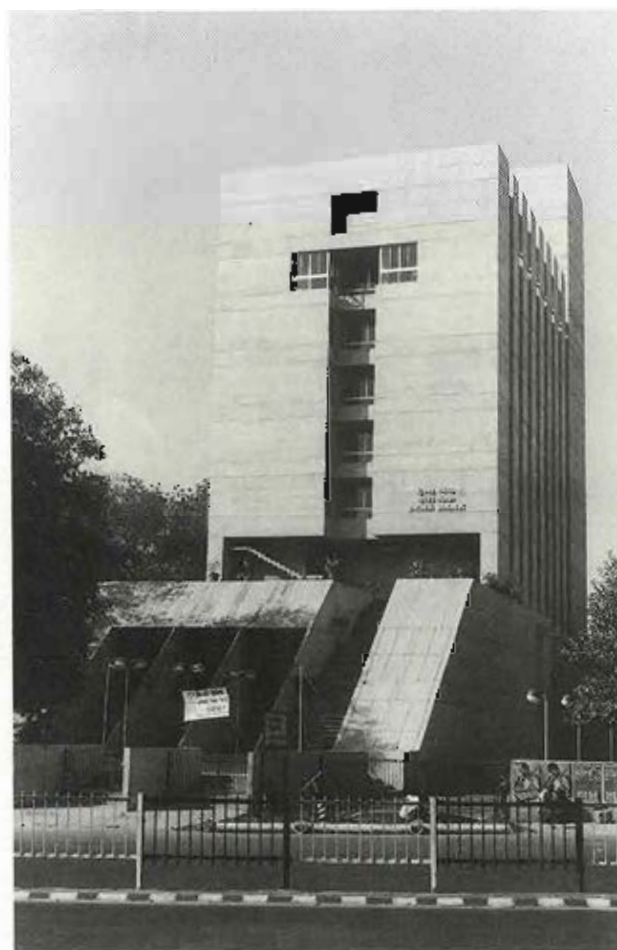
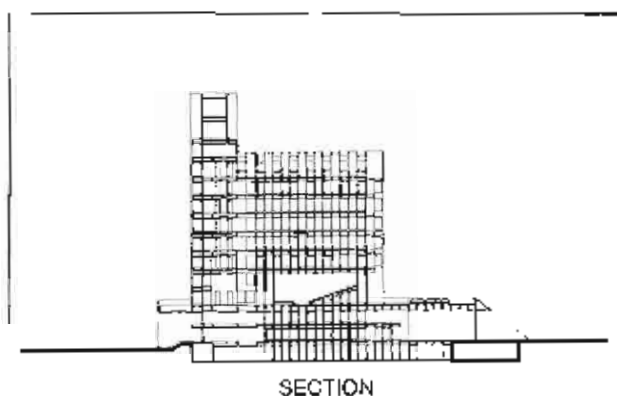
Year of Completion: 1982

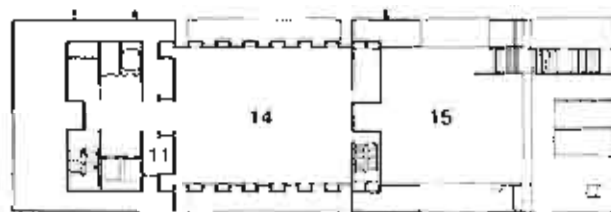
Area: 6800 m²

The Ahmedabad headquarters of the Dena Bank has its precedent in the Central Bank's Ahmedabad offices designed by Balkrishna Doshi. The programmes of the two buildings with their hierarchical division between an office tower and the public banking facilities at street level are almost identical. Variations in the design of the Dena Bank stem from different site conditions and the need to create a distinctive identity for the corporate client. Although the site is long and narrow, the environs are comparatively suburban, dominated by trees rather than a dense wall of buildings. The office tower recedes from the street, set back on a wedge-shaped podium. A row of neem (*Azadirachta indica*) trees shades the casual entrance plaza that leads into the banking hall. The public is invited to ascend a grand staircase onto the podium. An auditorium, slung beneath the office tower, is accessible from this upper terrace.

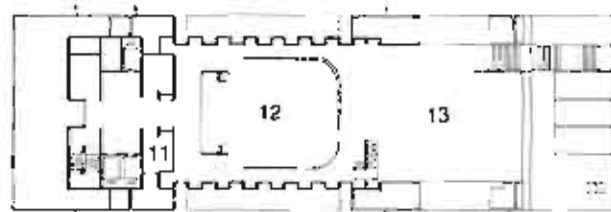
The monolithic concrete construction of the building is unusually well finished. The narrow, deep-set fenestration of the wall surfaces presents a variation on the image of security traditional to the architecture of banks. This severity is relieved, however, by the curious face-like incision of windows on the narrow street facade, which reinforces the anthropomorphic massing of this building.

1. Street view
2. Banking hall





TYPICAL FLOOR PLAN



SKIP FLOOR PLAN

- 1 PLAZA
- 2 PUBLIC ENTRANCE
- 3 BANKING HALL
- 4 AGENT OFFICE
- 5 STORAGE
- 6 TELEPHONE ROOM
- 7 STRONG ROOM
- 8 TOILETS
- 9 ELECTRICAL ROOM
- 10 STAFF ENTRANCE
- 11 AIR HANDLING ROOM
- 12 CONFERENCE ROOM
- 13 PODIUM
- 14 OFFICE SPACE
- 15 STORAGE

