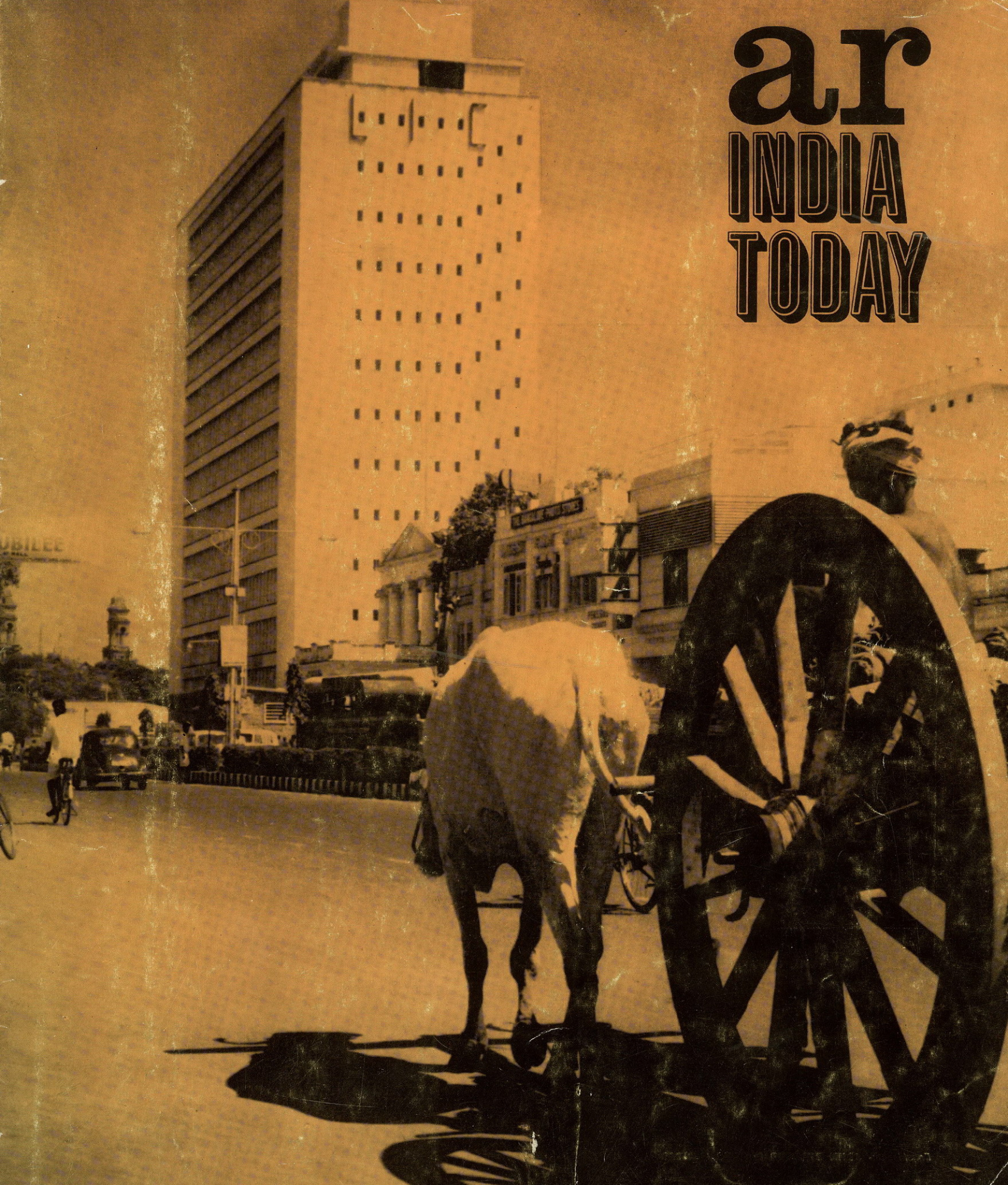
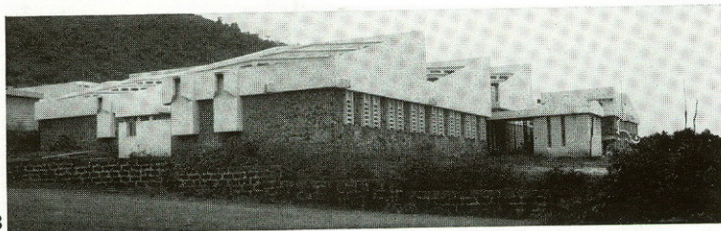


ar INDIA TODAY

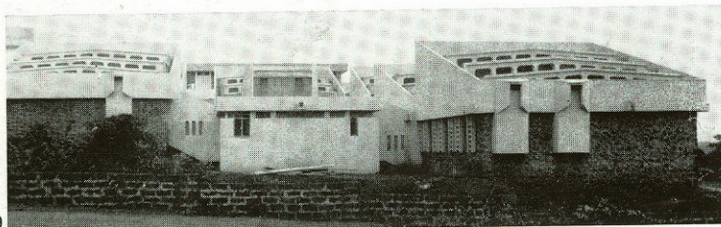




67

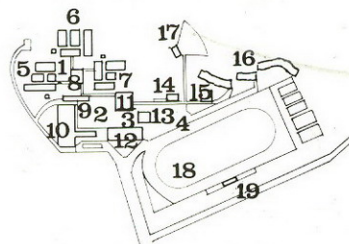


68



69

- key**
- 1. science court
 - 2. arts court
 - 3. administration court
 - 4. entrance and parking
 - 5. chemistry dept
 - 6. physics dept
 - 7. biology dept
 - 8. departmental library
 - 9. tutorial rooms
 - 10. lecture theatres
 - 11. main library
 - 12. multipurpose hall
 - 13. administration
 - 14. students' union
 - 15. chapel
 - 16. residences
 - 17. open-air theatre
 - 18. sports stadium
 - 19. stands



women's college, Goa: site plan

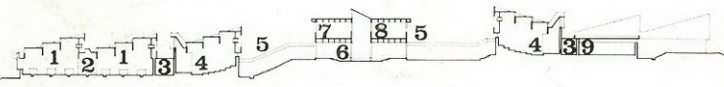
WOMEN'S COLLEGE, GOA

Carmel College for Women, at Nuvem (on the road between Panjim and Margao, the two principal towns of Goa) is a residential college for the study of science and the humanities, but only the first phase—comprising the science section—is on the point of completion. The teaching buildings are planned round three diagonally linked courts descending the slope of a hill, with a library forming the focus of the group. More informally laid-out residential blocks follow the contours. Construction is stone with reinforced concrete for the roofs, the laboratories and lecture theatres having north or south lighting through pierced roof beams. This produces an angular profile visible in 68 and 69. In the centre is the preparation block. The projecting concrete elements are fume-cupboards. Architect, Sarto Almeida.

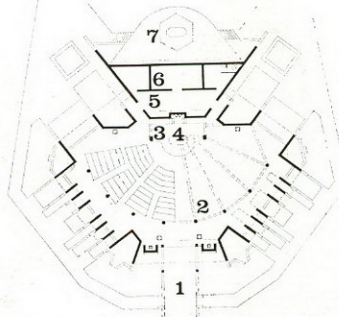
CYCLE FACTORY, FARIDABAD

In Haryana, northern India, one of a number of industrial and administration buildings by the same architects for the firm of Escorts Ltd. This factory houses the firm's scooter and cycle making operations and has a hyperbolic paraboloid lattice shell roof, specially designed for good insulation. Architects, J. A. Stein & Associates (Joseph Stein, Jai Rattan Bhalla, V. D. Joshi, Pritpal Singh and P. K. Chaudhery).

- key**
- 1. laboratory
 - 2. balance-room
 - 3. corridor
 - 4. lecture theatre
 - 5. courtyard
 - 6. students' forum (in open ground floor)
 - 7. library
 - 8. lecturers' room
 - 9. stores



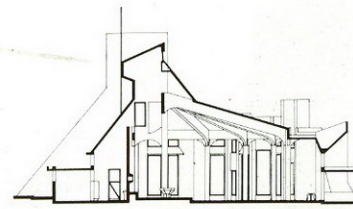
women's college, Goa: section



- plan**
- key**
- 1. entrance
 - 2. nave
 - 3. sanctuary
 - 4. altar
 - 5. sacristy
 - 6. private chapel
 - 7. outdoor altar

CHURCH, PANJIM, GOA

Built for the use of the Don Bosco high-school in Panjim, and located in its compound, the church is also open to the public. It seats about 500 and has a fan-shaped nave focusing on the sanctuary behind which are the sacristy and a private chapel where resident priests can celebrate mass independently of the main services. Air circulation is obtained through tall windows separated and shaded by the buttress-like walls—see external view, 67. Above these windows are fixed horizontal windows with coloured glass. Construction is wholly reinforced concrete, the main roof being a semi-circular slab carried on beams that converge towards the sanctuary, with part of the slab folding upwards to form a cupola. Architect, Ralin de Souza.



church at Goa: section

AGRICULTURAL COLLEGES, EAST PUNJAB

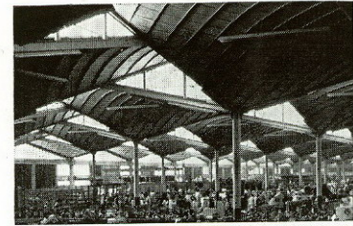
Two agricultural colleges in the same State: 71, at Hissar, a railway-junction 100 miles west of Delhi: view from the north, showing two of the three parallel teaching blocks, containing laboratories and classrooms. The sloping facade elements indicate the position of the main lecture-theatres, which have raked seating. In a courtyard between two of the teaching blocks is a hexagonal library and auditorium. 72, at Ludhiana, in the centre of the State between Patiala and Amritsar: a garden court surrounded by teaching buildings in a college specialising in agricultural engineering. Architect, Aditya Prakash.

WELFARE CENTRE, MOKASAN

A medical and social welfare centre in a village in Gujarat State, combined with residential accommodation and a prayer-hall for the religious order that runs it. Medical, waiting, examination and injection rooms, and the dispensary, surround a courtyard at ground level. Above them are the residential and dining rooms of the order, which are connected by a corridor and bridge to the prayer-hall, seen on the right in 73. Architect, Hasmukh Patel.

MEMORIAL AND MUSEUM, POONA

The memorial is to Mahatma Gandhi's wife, Kasturba, and is at the place where she was cremated. It is sited on the boundary of a memorial park, and consists of a series of ramps, steps and viewing terraces, 74, enclosed by brick walls and incorporating a small museum. Architect, C. M. Correa.



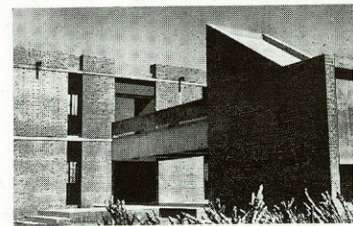
70



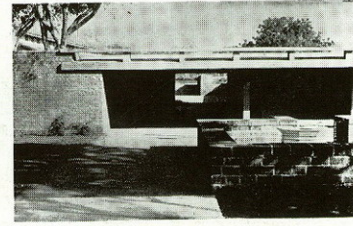
72



71



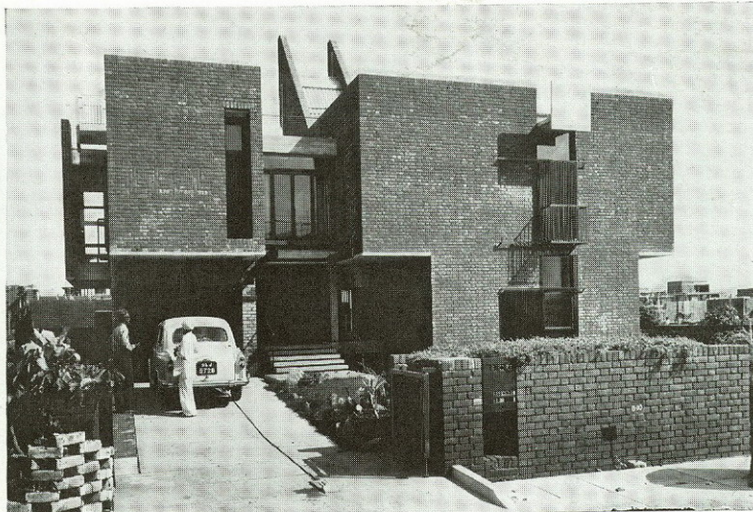
73



74

HOUSES

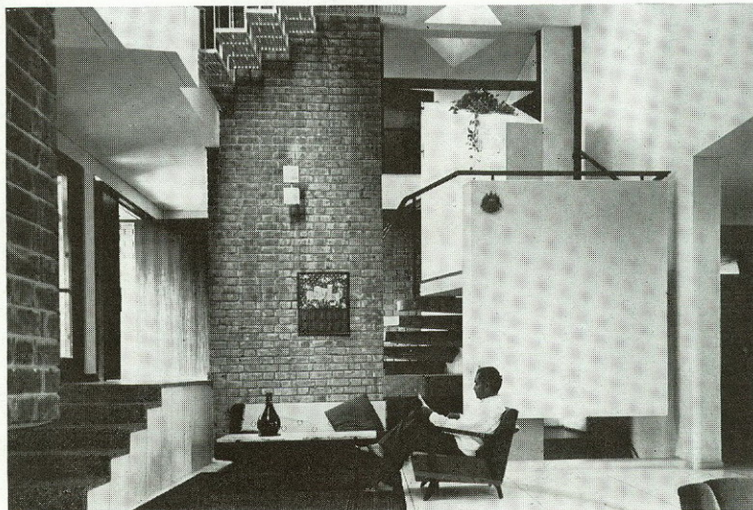
It has been explained in the introduction (page 344) to these pages illustrating recent buildings, that individual houses are given minimal attention because they have little relevance to the main themes of this issue. But Indian architects have designed some admirable private houses, and half-a-dozen of the best are shown herewith. 75, his own house in New Delhi by Achyut Kanvinde, with an interior, 76, planned round a high, airy living-hall; 77, small house for a young business-man in a New Delhi suburb, by Shivnath Prasad; 78, entrance forecourt of his own house in Ahmedabad by Hasmukh Patel; 79, house at Ahmedabad by C. M. Correa, with a sequence of indoor and outdoor spaces created between parallel brick walls; 80 and 81, entrance and living area of his own house in Ahmedabad by B. V. Doshi; 82, six-bedroom house at Ahmedabad with an exposed steel structure, by Kamal Mangaldas; 83, garden (river-side) front of a small house in Ahmedabad also by Kamal Mangaldas, built for a scientist in the same compound as his main house.



75



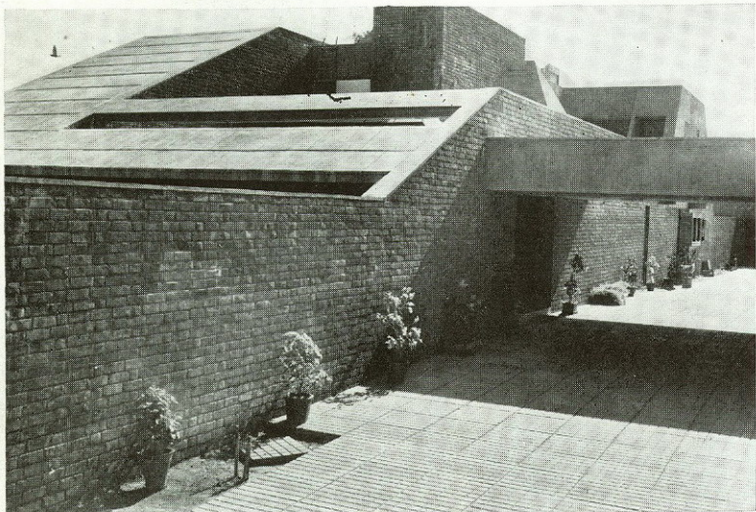
77



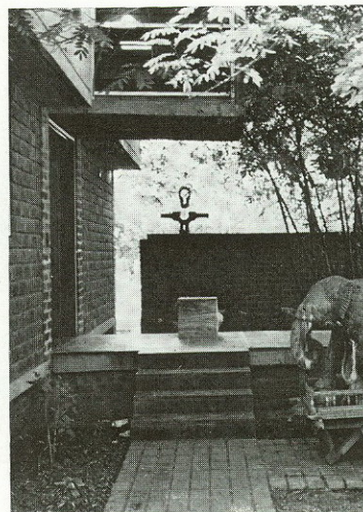
76



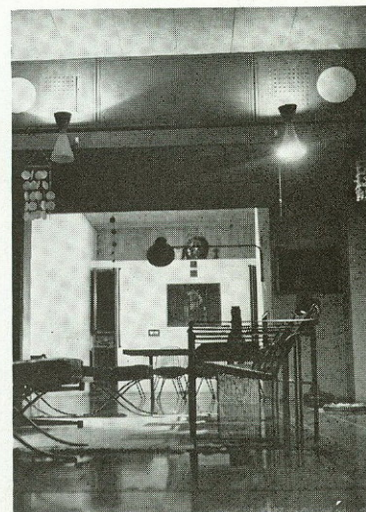
78



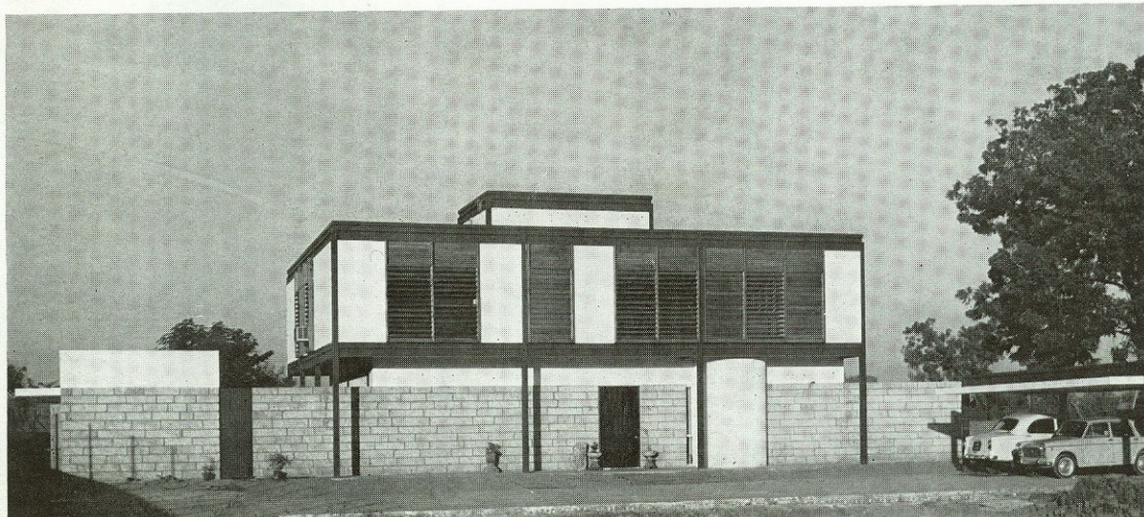
79



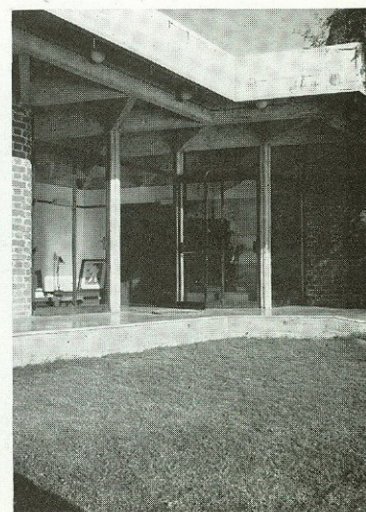
80



81



82



83