

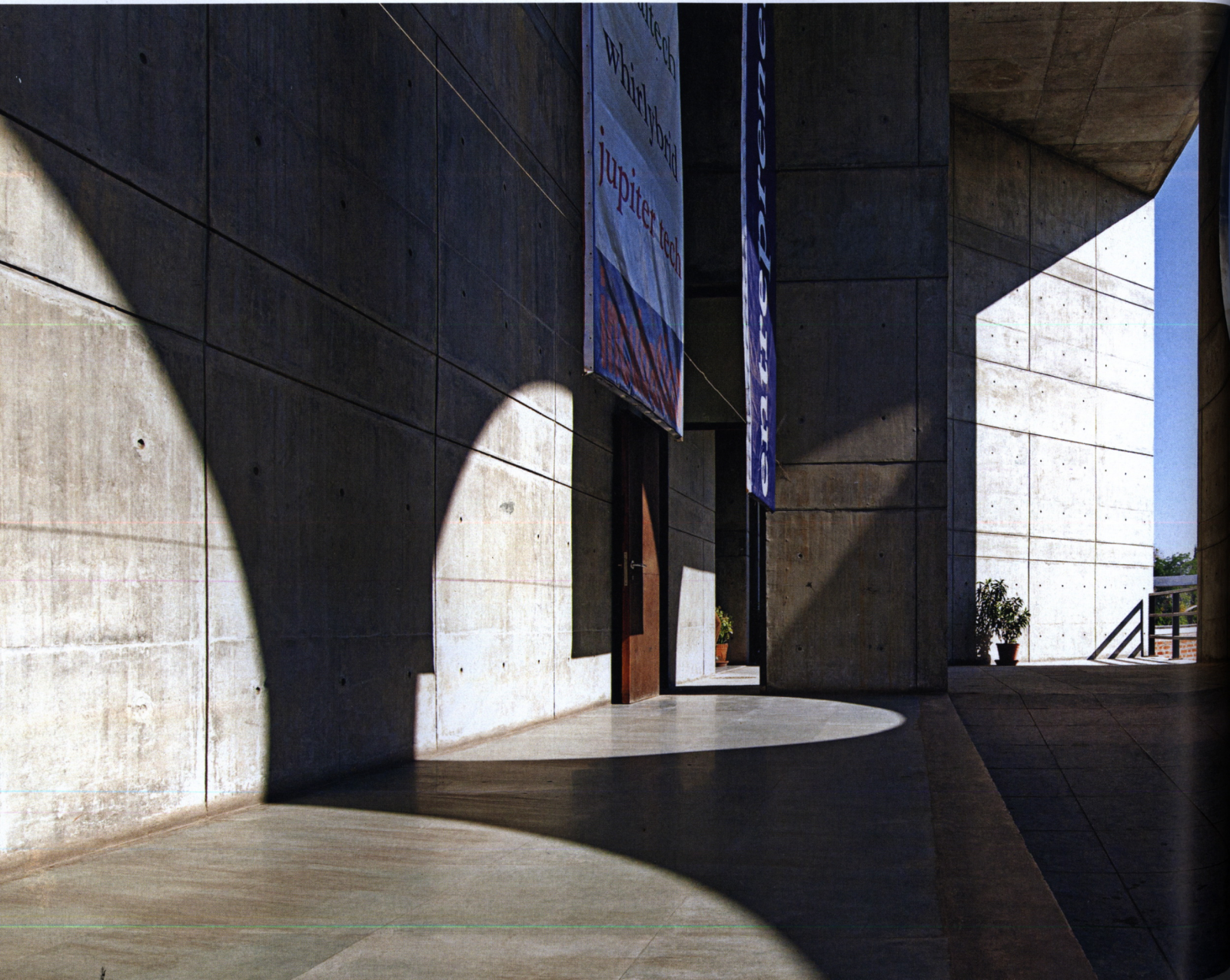
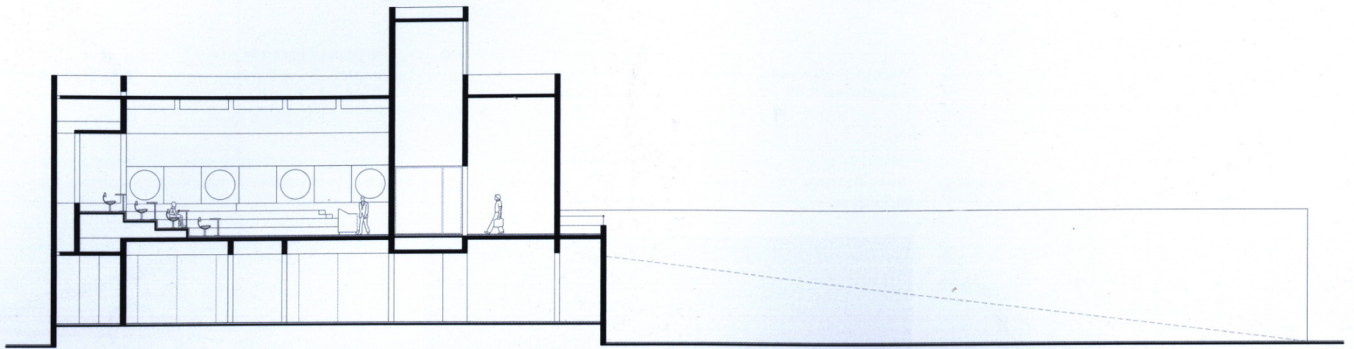


RAHUL  
MEHROTRA

ARCHITECTURE  
IN INDIA

SINCE 1990

PICTOR



folio 6

# INDIAN INSTITUTE OF MANAGEMENT, Ahmedabad

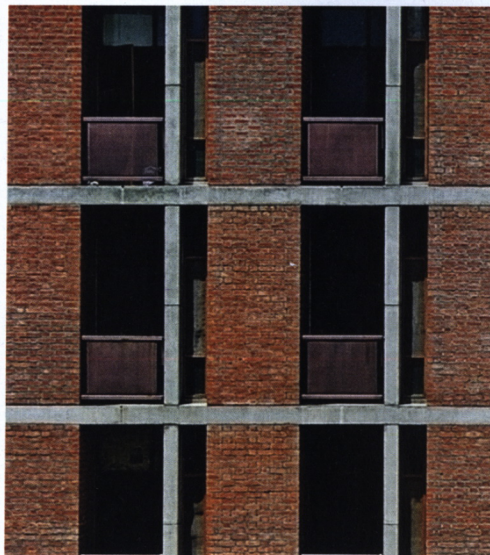
## HCP Design and Project Management

The new campus for the Indian Institute of Management, Ahmedabad (IIMA) is located adjacent to the original building designed by Louis Kahn. Though both campuses function independently

without any apparent link, they are connected by a pedestrian underpass creating easy access between them. This 16-hectare site houses new areas for teaching and residential purposes for the International Management Development Centre, the Centre for Innovation, Incubation and Entrepreneurship and also the Institute's post-graduate programme, along with guest rooms and dining and sports facilities.

The use of smoothly shuttered exposed concrete as the primary building material, with fenestration in a combination of mild steel and wood, gives the new facilities a distinct vocabulary while in formal terms the new buildings allude to the architecture of the

original campus. A deliberate attempt seems to have been made by the architect to refer to, and provide continuities with the existing structures through the use of diagonal geometries in the dormitory layout, semicircular stairs and turrets, and materials and compositions using abstract forms and large surfaces. This is sometimes limiting in terms of the potential that could have been exploited in expressing a similar programme decades later. In spite of this limitation, however, and the looming presence of Louis Kahn, the architect has managed to correct a number of pragmatic problems with the old campus while creating a distinct identity for the new one.



**Cross-section through classroom** The drawing shows how the classrooms are elevated in section, giving them a handsome spatial volume while segregating them from the functions on the lower level

**Entry to classroom** The ramp leads up to the academic block, whose stark modernist architecture is tempered with warm interior lighting, wood-finished furniture and panelling

**Detail of dormitory façade** The use of brick and metal offsets the stark exposed-concrete surfaces to create an interplay of light and shade along the balconies

**Culmination of corridors** Dead-end spaces are treated skillfully by allowing filtered light to flood these areas, creating an enigmatic moment in an otherwise monotonous circulation route

**Entrance foyer of IMDC block**

Large metal screens, by Walter D'Souza, serve as filters for the harsh light in Ahmedabad. The textural relief that these metal screens provide visually offsets the raw concrete and the otherwise diagrammatic nature of the buildings

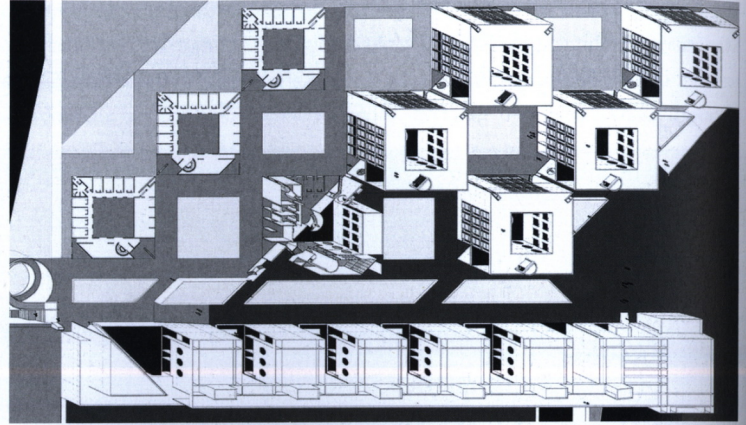
**Axonometric view of dormitories and seminar rooms**

Arranged on a diagonal grid, these multistoreyed living units make reference to the planning principles of the neighbouring older campus designed by Louis Kahn. The

new water tower and underpass lie on axis with the dormitories on the existing campus, creating a promenade that divides the new residential quarters from the lecture halls and seminar rooms

**View of the dormitory courtyard from the ground level** An arcaded walkway around the courtyard provides covered circulation that in turn connects to the vertical access points

**View from IMDC foyer** Large openings provide framed views of the adjoining landscaped plaza and the built forms around it, thus serving as an orientation device as one moves through the campus



**Academic block entrance plaza** The visual articulation of the entry plaza breaks the monolithic horizontality of the academic block. The composition of the ramp, walkway, metal screens and lotus pond makes for a sense of welcome on arrival

