

30°

45°

60°

75°

90°

105°

120°

135°

150°

165°

180°

1,037 Buildings

244 Single Houses

18 Libraries

653 Architects

63 Schools

8 Embassies

6 Geographical Regions

11 Art Galleries

28 Hotels

76 Museums

6 Railway Stations

7 Swimming Pools

2 Town Halls

57 Office Buildings

38 Universities

8 International Airports



THE

PHARADON

ATLAS

OF 21ST

CENTURY

WORLD

ARCHITECTURE





1



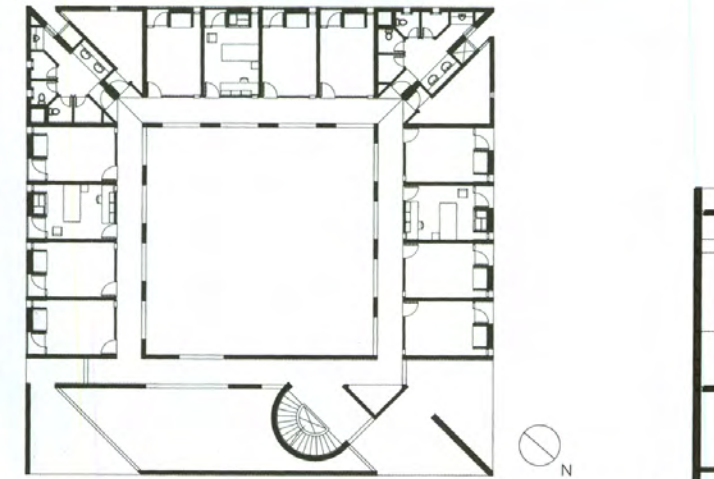
2



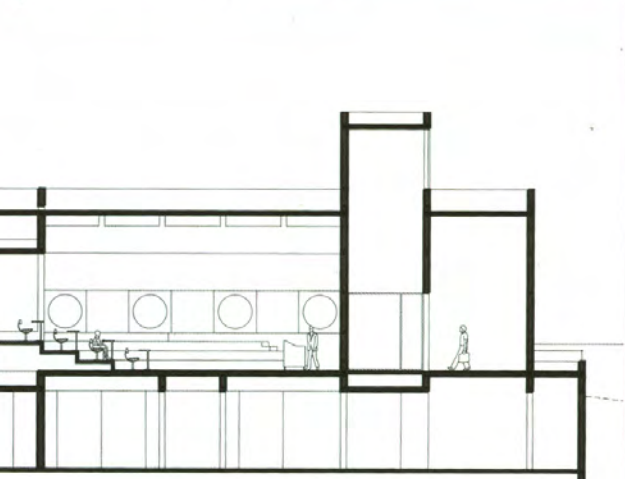
3



4



5



6

0075 The project comprises the addition of housing and classroom facilities to the Indian Institute of Management in Ahmedabad. The Institute's main campus was designed by American architect Louis I. Kahn in 1963. The new project uses the geometries and overlying organization of Kahn's work as a starting point for its design, but choices of materials and a new architectural vocabulary break from the earlier work. An underpass connects the main campus to the project, leading students to an axis dividing classroom

buildings from housing. Each of the nine four-storey dormitories uses a square courtyard typology and houses between 25 and 44 students. Student rooms line the external perimeter of the cubic volumes and open hallways run along the interior courtyard. The volumes are staggered in groups of three, with their corners almost touching. This staggering creates semi-enclosed spaces between buildings that complement the interior courtyards. Each student room is expressed on the exterior

of the dormitories as an individual bay between vertical and horizontal concrete elements. Each bay includes a deep-set balcony, wooden framing for doors and a plane of red bricks flush with the structural elements. Across from the residences is a linear classroom block which runs parallel to the central axis. This element is defined by solid volumes, with classrooms and research facilities separated from each other by courtyard spaces. In both the dormitories and the classroom buildings, deep-set

balconies provide shaded exterior spaces and allow for cross ventilation. While the Kahn campus is unified by its use of red brick facades, surfaces of the new project are primarily of exposed concrete. Red stone tiles pave the exterior, interiors have a polished grey flooring.

- 1 Exterior view of dorm
- 2 Dorms seen from academic block
- 3 Academic block ground-floor corridor
- 4 Classroom interior

- 5 Typical floor plan for dormitory
- 6 Section through classroom building

Client
 Indian Institute of Management, Ahmedabad
Area
 30,000 m²/322,917 sq ft
Cost
 US\$30,056,700
Coordinates
 23.0308 72.5414