

JOURNAL OF THE INDIAN INSTITUTE OF
ARCHITECTS

VOLUME 56

ISSUE 03

MARCH 1991

Rs. 30



Entrepreneurship Development Institute

Ar. Binod Patil

First National Conference of
YOUNG ARCHITECTS

Entrepreneurship Development Institute

Ahmedabad, 1987 (Phase I)

Ar. Bimal Patel, M/s. Hasmukh C. Patel, Ahmedabad



View of the main entrance with forecourt



View of entrance to the hostel block

Spatial experiences

"One of the most profound and splendid expressions of oriental architecture in hot climates has always been the generous creation and use of 'inside-outside' spaces, whether they be the open-to-sky courts of the Maratha wadas, the exquisite terraces and courts of Rajasthani architecture or the spacious verandas of colonial buildings. Even the sphere of education and the pursuit of knowledge in our lands has been picturized by the guru sitting with his students under the shade of a tree. This element of unfettered space became the predominant factor guiding the design of the EDI where we explored to its fullest potential, the element of landscaping.

"The three major departments of administration, research and training are organized around open-to-sky courts. Each individual working space contains two types of spaces: a general area for meeting people, and a more private alcove or storage area for books, documents, etc.



Open-to-sky paved court



Interface of in-between space with open-to-sky courtyard



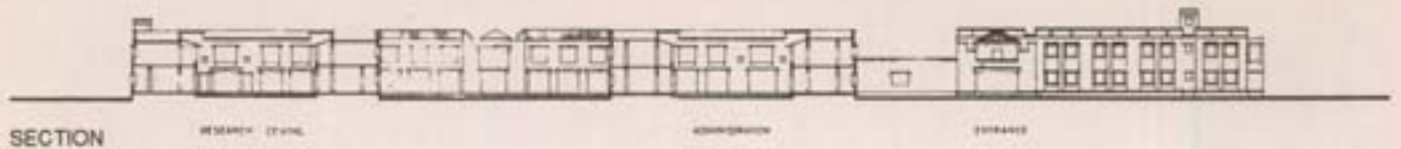
Open-to-sky courtyard with terraces



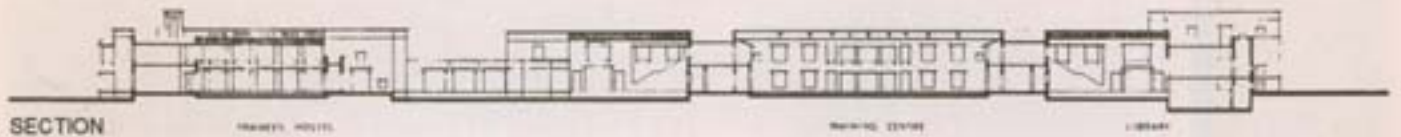
Open-to-sky courtyard in the hostel block

"The Computer Centre is located in a central position on the first floor and is accessible from all three major departments. Deep verandhas protect the rooms from excessive heat, keeping the Centre cool. The library was conceived as the fastest expanding facility on campus, and designed so that the existing service and control areas become centrally located once the building is extended. Maximum use of indirect north light helped to reduce dependence on artificial lighting. The documentation centre was also attached to this facility and placed on the first floor.

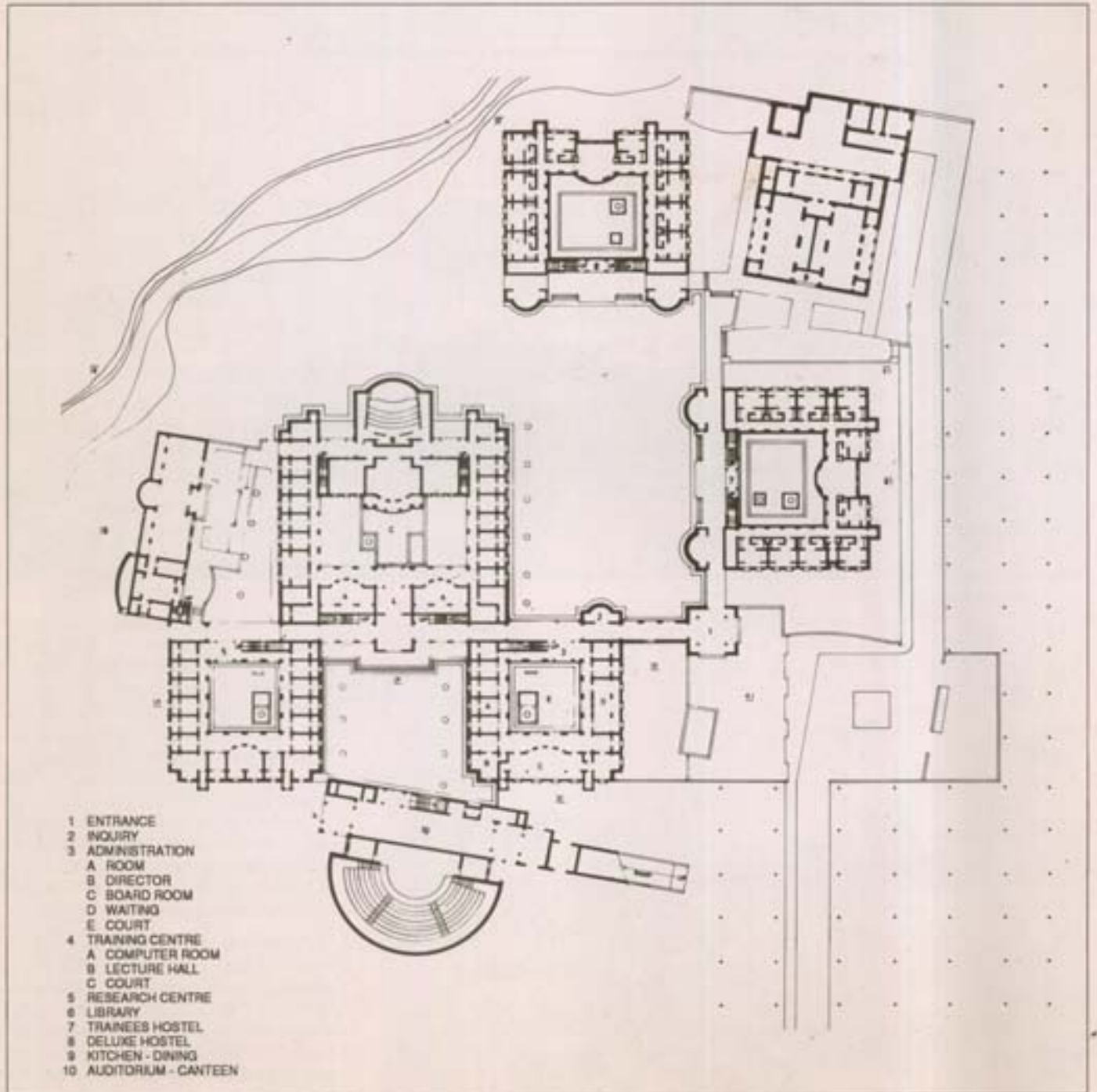
"However, the focal point of the Institute is the main court, defined by the canteen and the auditorium, and intended as an informal meeting place for the faculty and students. Institutional buildings occupy the higher areas of the site and are visible from the main point of access. The housing (not shown here), has been allocated a more secluded area and is further



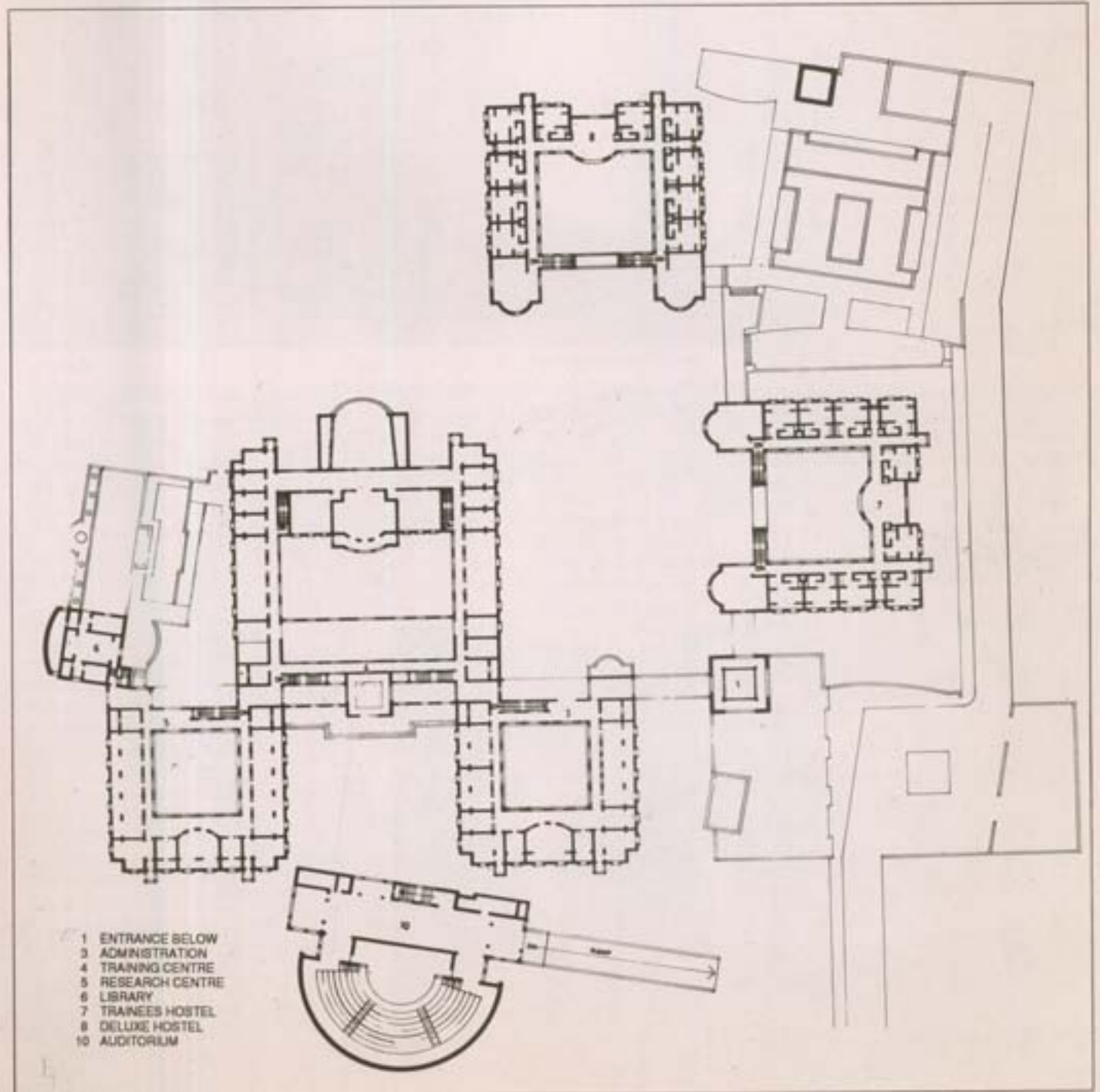
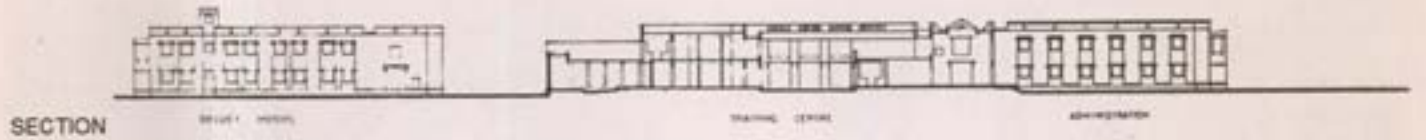
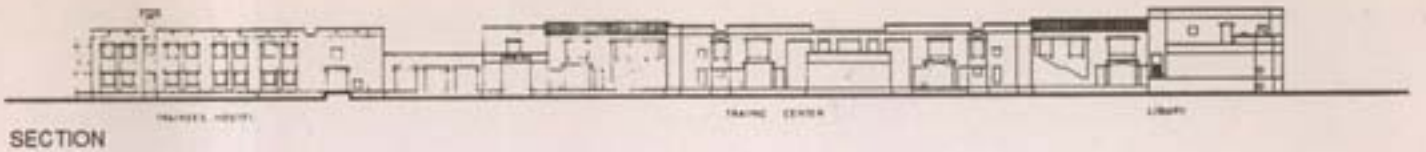
SECTION



SECTION



GROUND FLOOR PLAN



FIRST FLOOR PLAN

detached from the institutional facilities by a large patch of green space. As the students and trainees will reside in the campus only for short periods of time, the hostels and guest rooms have been kept in close proximity to institutional activities. They are accessible primarily from the entrance pavilion, and are also organized around landscaped, open-to-sky courts. The facilities common to these buildings are located along the major spine. Within the hostels, each room consists of two study alcoves, two beds, storage space, a pantry and a toilet.

"We welcomed the suggestion of the management to design a building where the use of artificial energy was kept to the minimum. However, past experience limited our enthusiasm for non-conventional sources of energy using untested systems that often turn out to be most impractical. Instead, the open-to-sky courts which have been repetitively used are a time honoured solution. Verandas and recessed windows in relatively thick masonry walls, also help by forming barriers to the sun without shutting off natural light. The RC slabs, insulated by the use of inverted clay pots, are another means of reducing heat gain, as is the china mosaic finish on the terrace.

"While designing, the need for future expansion was kept in mind. Additional



View of the main corridor

work areas are proposed to be incorporated on the floors above the existing facilities. The courtyard spaces have been studied to accommodate these so that additions do not seem haphazard. To introduce new facilities, the main spine of the present building can be extended and new departments attached. Additional facilities can also be directly connected to the open side of the entrance plaza if required." Bimal Patel



Courtyard of the hostel block

CREDITS

- Client - Entrepreneurship Development Institute of India
- Architects - M/s. Hasmukh C. Patel, Architects and Planners, Ahmedabad 380013.
Principal Designer: Bimal Patel
Design Team: Jayant Gunjaria, Shirish Shahsane
Construction Management: Arvind Patel, Ramesh Desai
- Consultant - Vakil Mehta Sheth (Structural) S.K. Murthy, Bombay (Airconditioning, Electrical, Drainage & Water Supply) P.B. Bhagvat, Ahmedabad (Land Scape)
- Contractors- Gannon Dunkerly & Co., Ahmedabad (Civil, Internal Electrical & Plumbing)
- Area - 6,820 Sq. mt.-1st Phase (presently constructed)
- 2,390 Sq. mt.-IInd Phase
- Year of Completion - Time limit-18 months
- Completion-December 1987 (1st Phase)
- Cost - Rs. 1,65,00,000/- (1st Phase) Here major infrastructure facilities for IInd Phase are executed.
Rs. 35,00,000/- (IInd Phase)-Estimated



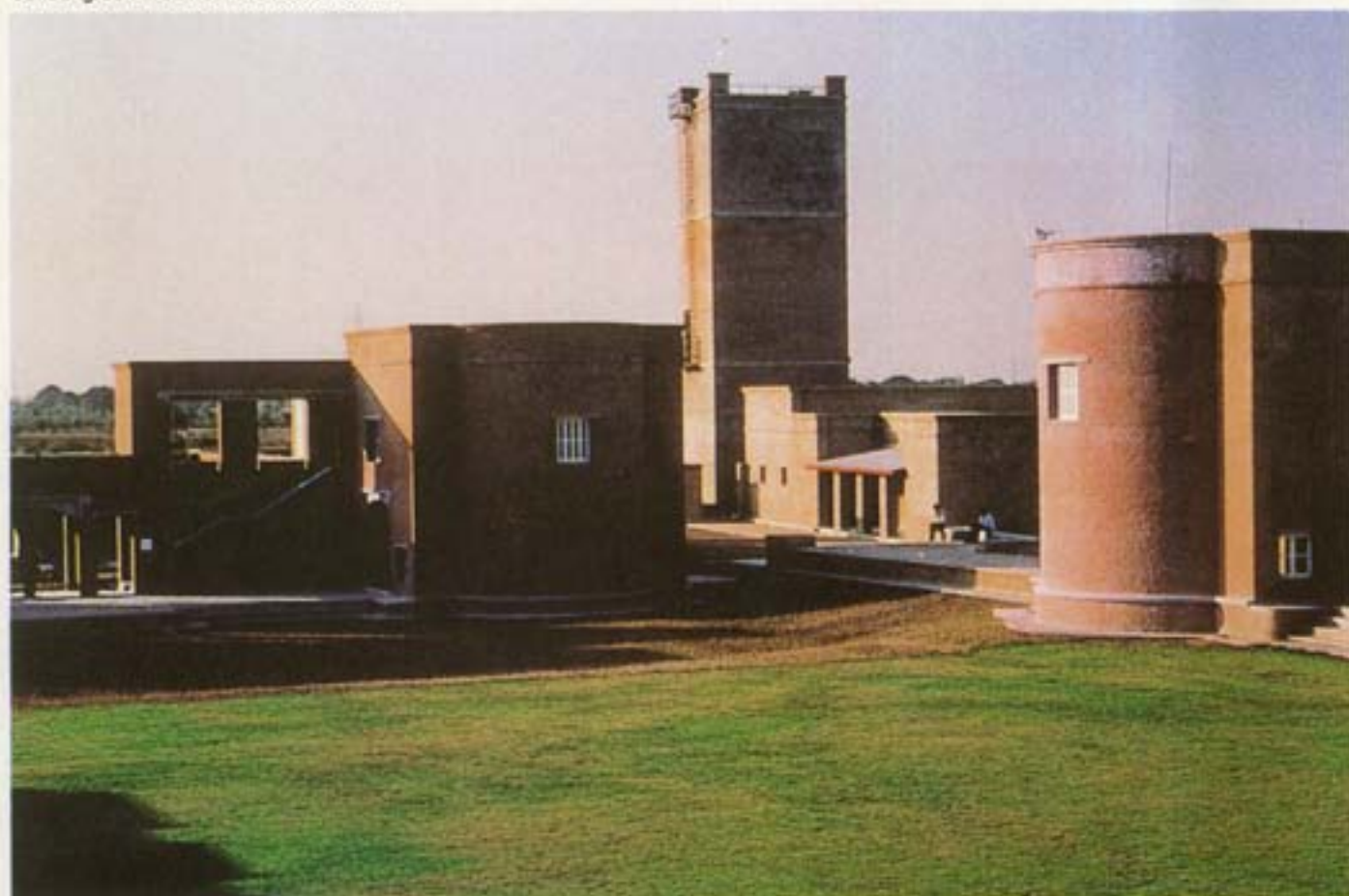
Landscaped court



Interior view of the hostel room



Central green area near the hostel blocks



The clock tower as a landmark